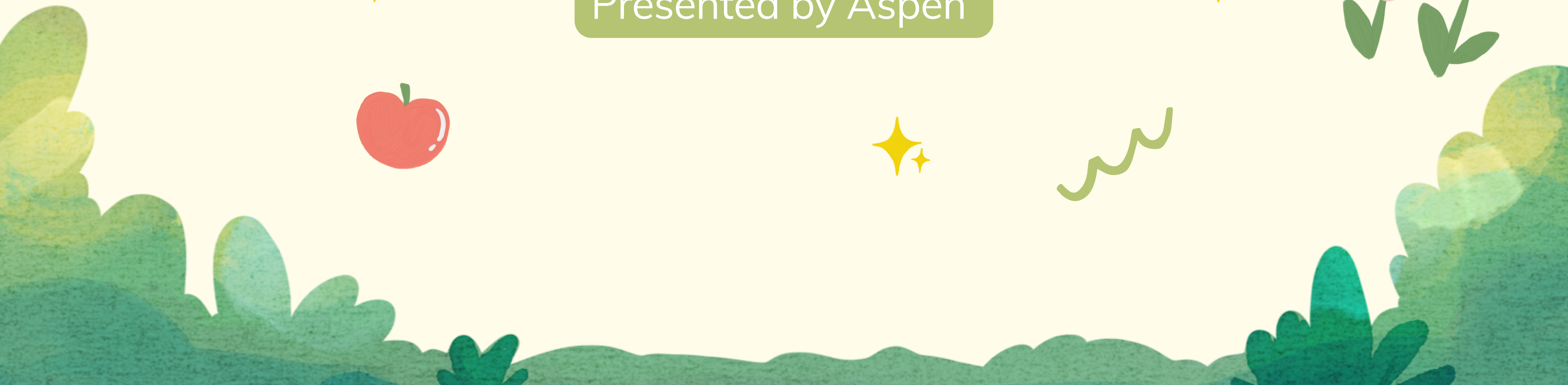
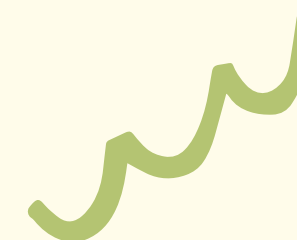
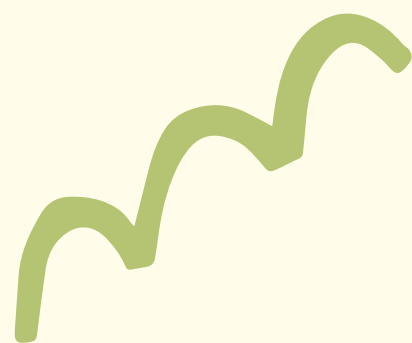


SOUTH KOREA

Presented by Aspen



KOREA AT A GLANCE

South Korea, also known as The Republic of Korea was established in 1948. Before then North and South Korea was unified and historically under the rule of their own kings until the Japanese invaded and took control of the country in 1910. It was not until after WWII when Japan had surrendered that the country split along the 38th parallel with the Northern half under control by the Soviet Union, and the Southern half under The U.S.A .

Today South Korea is best known for its pop culture and media; such as K-Dramas and K-pop.

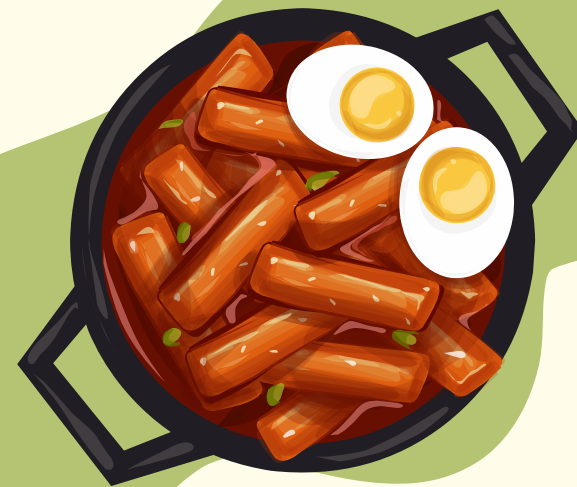




TODAY'S TOPICS



Education



Food &
Food Culture



Work
Culture



Military

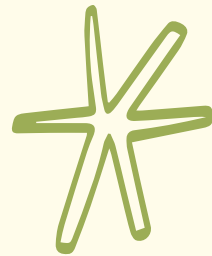




EDUCATION



- Schools
 - ~ 8 hours everyday
- Hagwons
 - up to 8 hours everyday
- Test and exams
 - An Ugly Truth



https://youtu.be/yAj_Vm9WP8A

FOOD & FOOD CULTURE

TABLE SETTINGS

- Most meals in Korea are either eaten with a spoon and chopsticks, or with your hands!
- Korean Restaurants usually have a drawer built into the table containing chopsticks, spoons and napkins!

MANNERS + RULES

- No one starts eating until the eldest at the table eats
- Do not use your own utensils to put food on your plate
- If alcohol is served, the youngest pours the eldest's glass first, with both hands, before pouring for the rest of the table
- When drinking alcohol, you must face away from your elders to show respect





WORK CULTURE

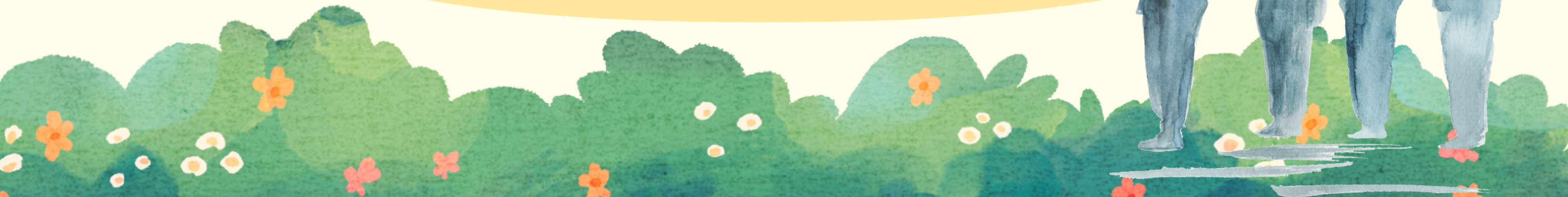
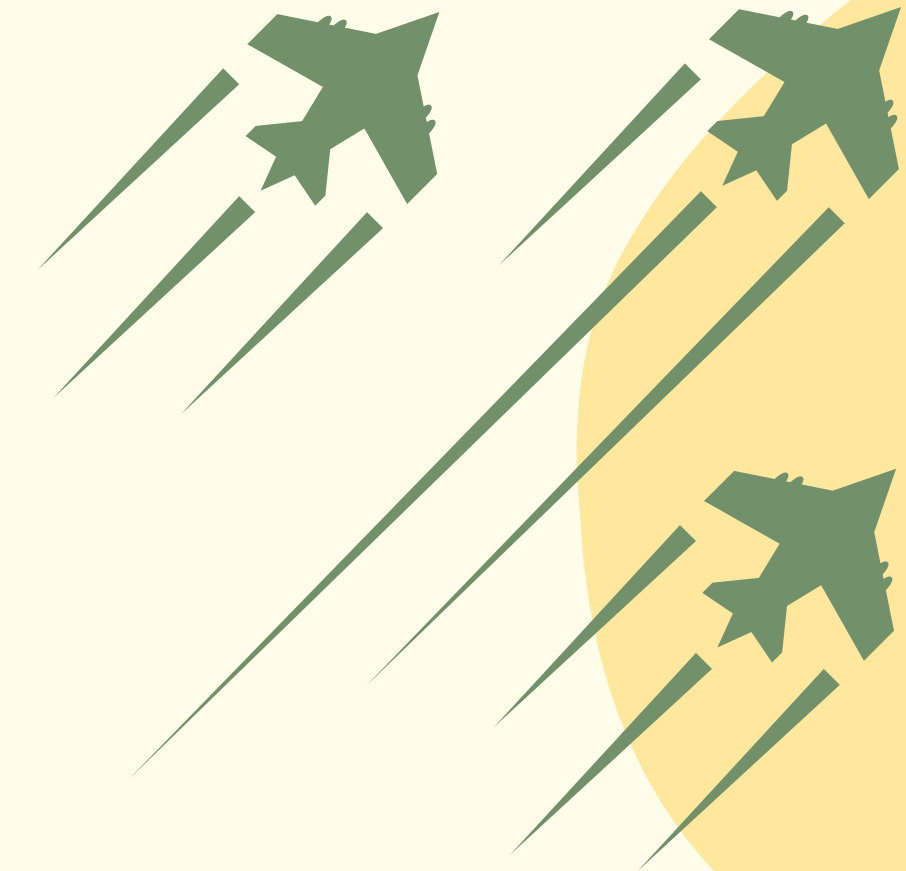
- Hierarchal
- "Business Meetings" after work (Nomikai)
- Formal Attire
- Picture of self attached to resumes
 - Men @ 33
 - Women @ 28



MANDATORY MILITARY ENLISTMENT

MANDATORY????

- EVERY Korean Man between 18 - 35
- Yes, even K-POP Idols!
- 2 years minimum (with some exceptions)
- Women allowed to enlist, but not mandatory
- Very limited phone/internet use



감사합니다



Jin
BTS



Shownu
MONSTA X



P.O
BLOCK B